



Policy Updates in the Land Sector, Planning & Monitoring

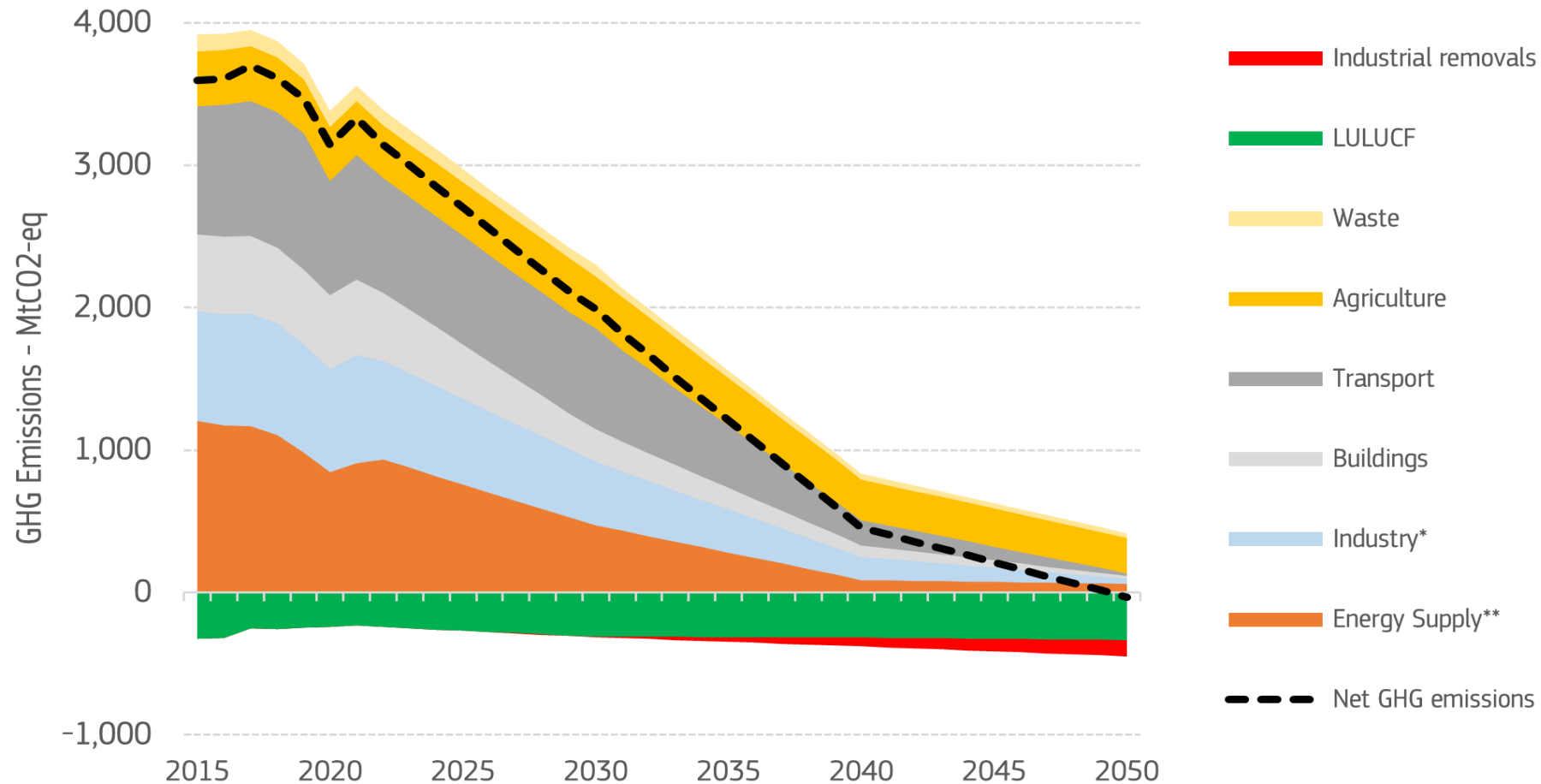
10 December 2025

Jurij Krajcic

DG CLIMA Unit C3: Land economy and carbon removals

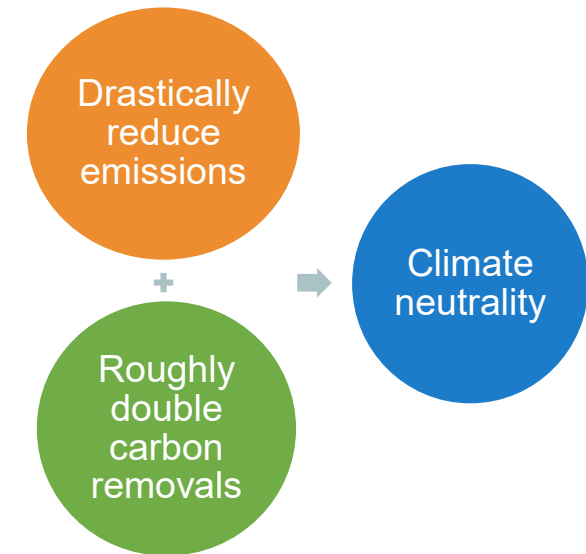
Towards climate neutrality

Historical and projected sectoral greenhouse gas emissions in the period 2015-2050

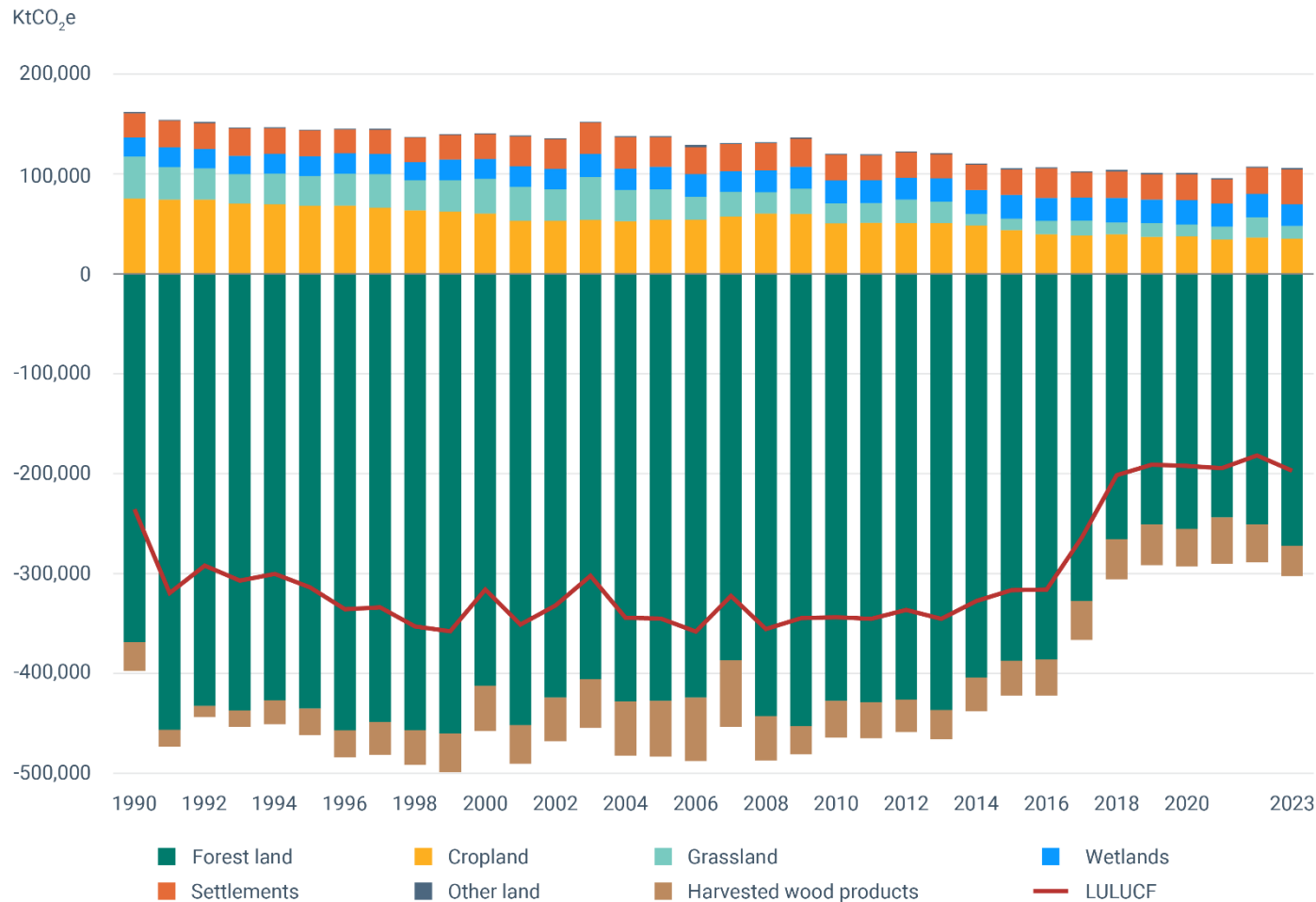


*Excluding non-BECCS industrial removals

**Including bioenergy with carbon capture and storage (BECCS)



LULUCF removals



Status (2023)

- Net land carbon sink was -198 MtCO₂e

Trend

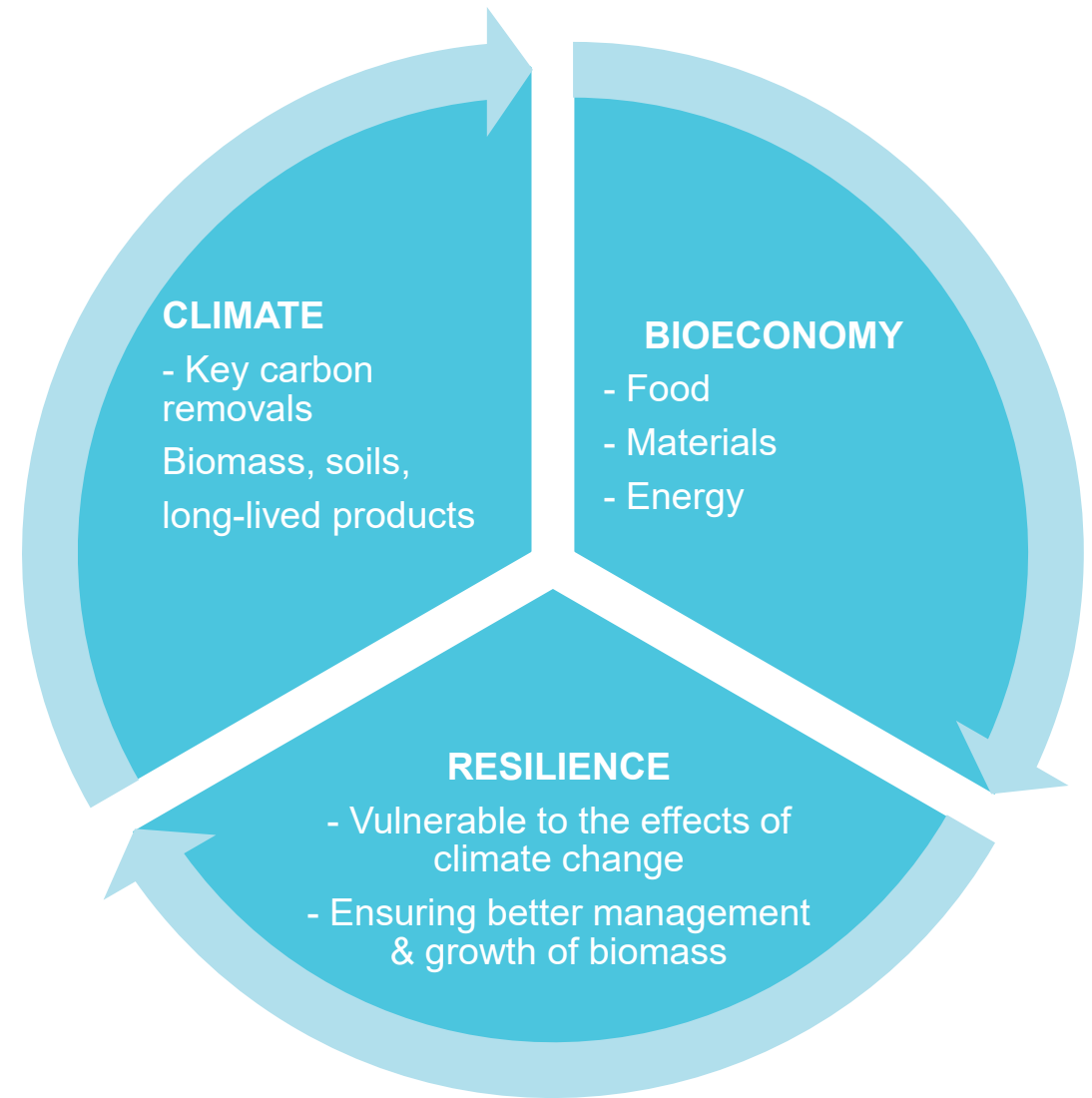
- Declining net sink
- 2014-2023 the average annual sink was 30% smaller compared to 2004-2013

Main factors

- Decline in the forest sink
- Cropland and settlements are the major sources of emissions

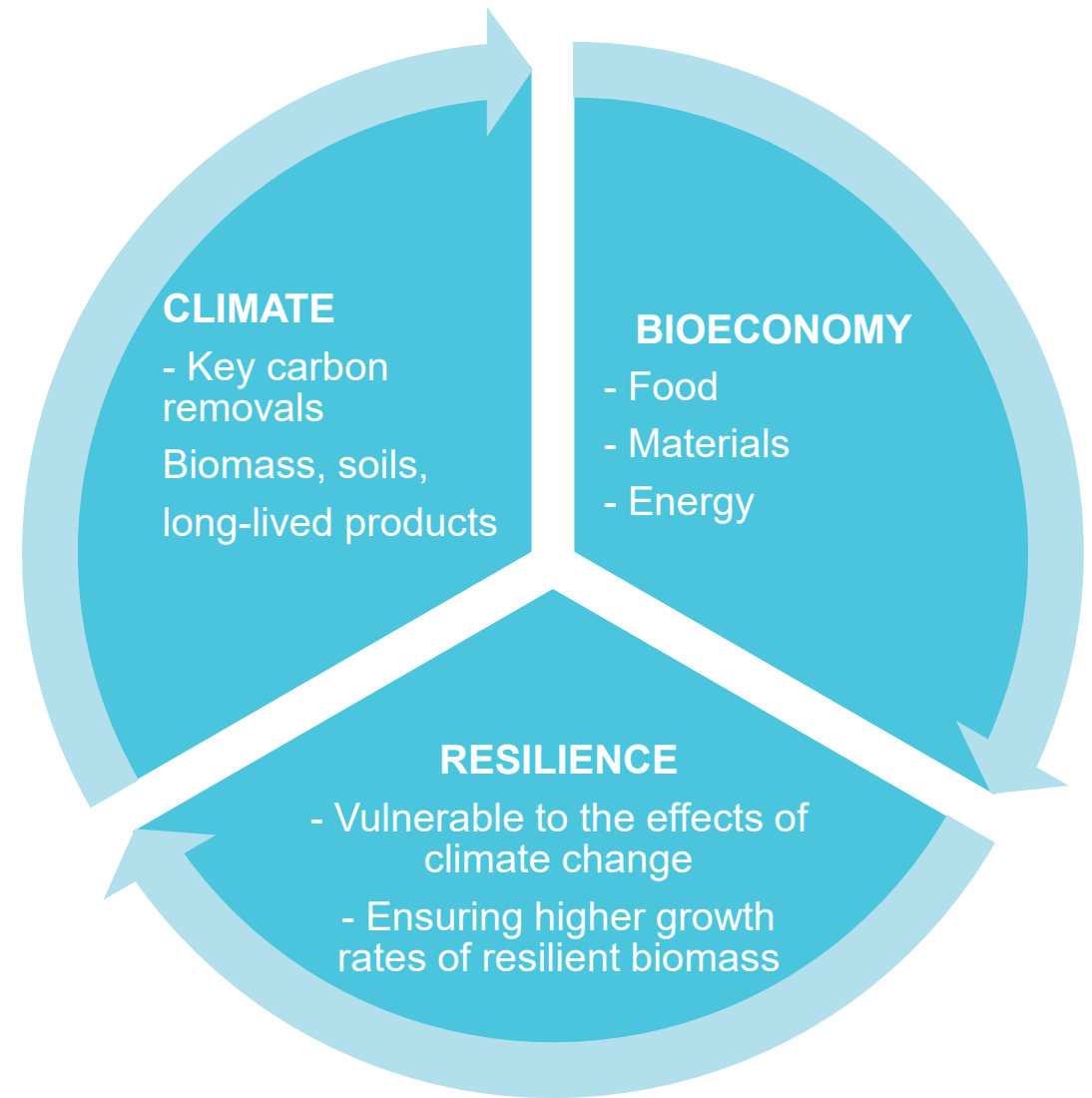
The Context of Land

- One of the EU's most important natural resources



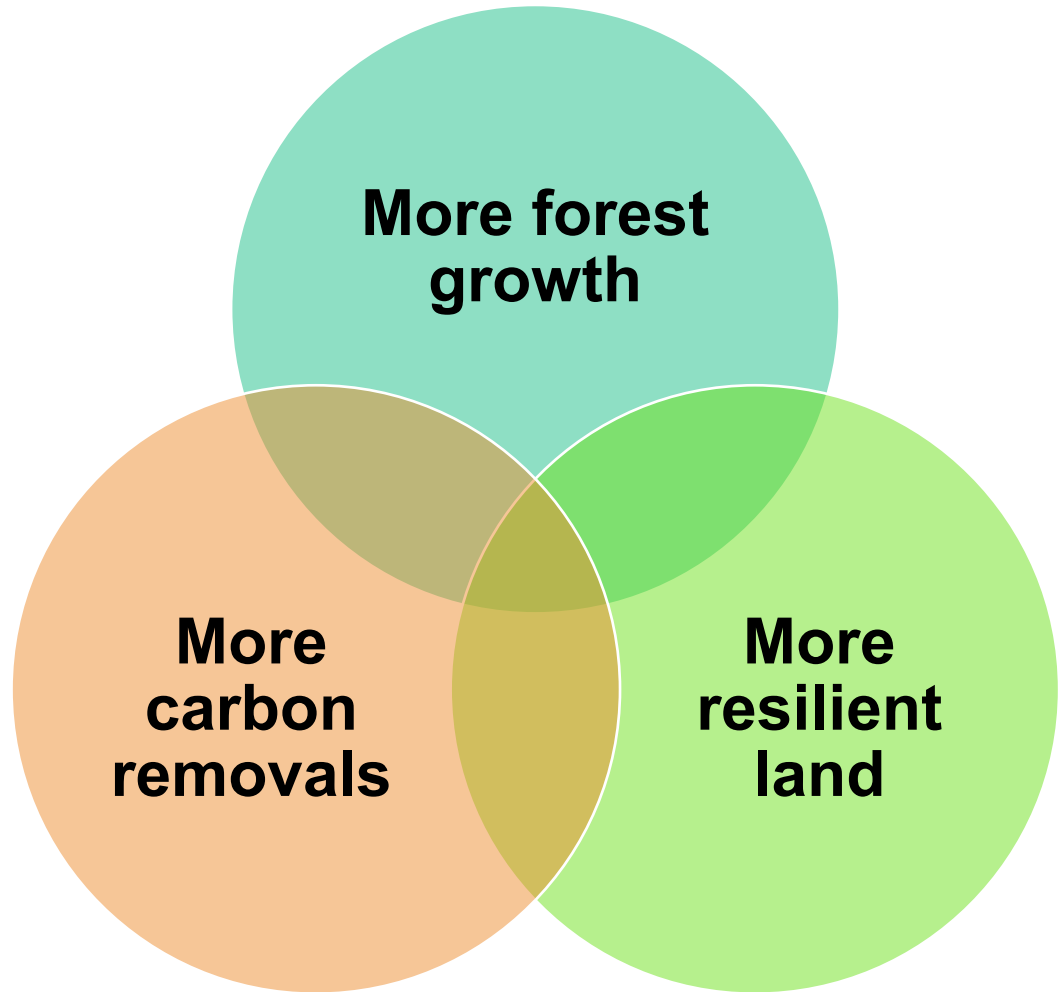
The Context of Land

- Perhaps EU's most important natural resource



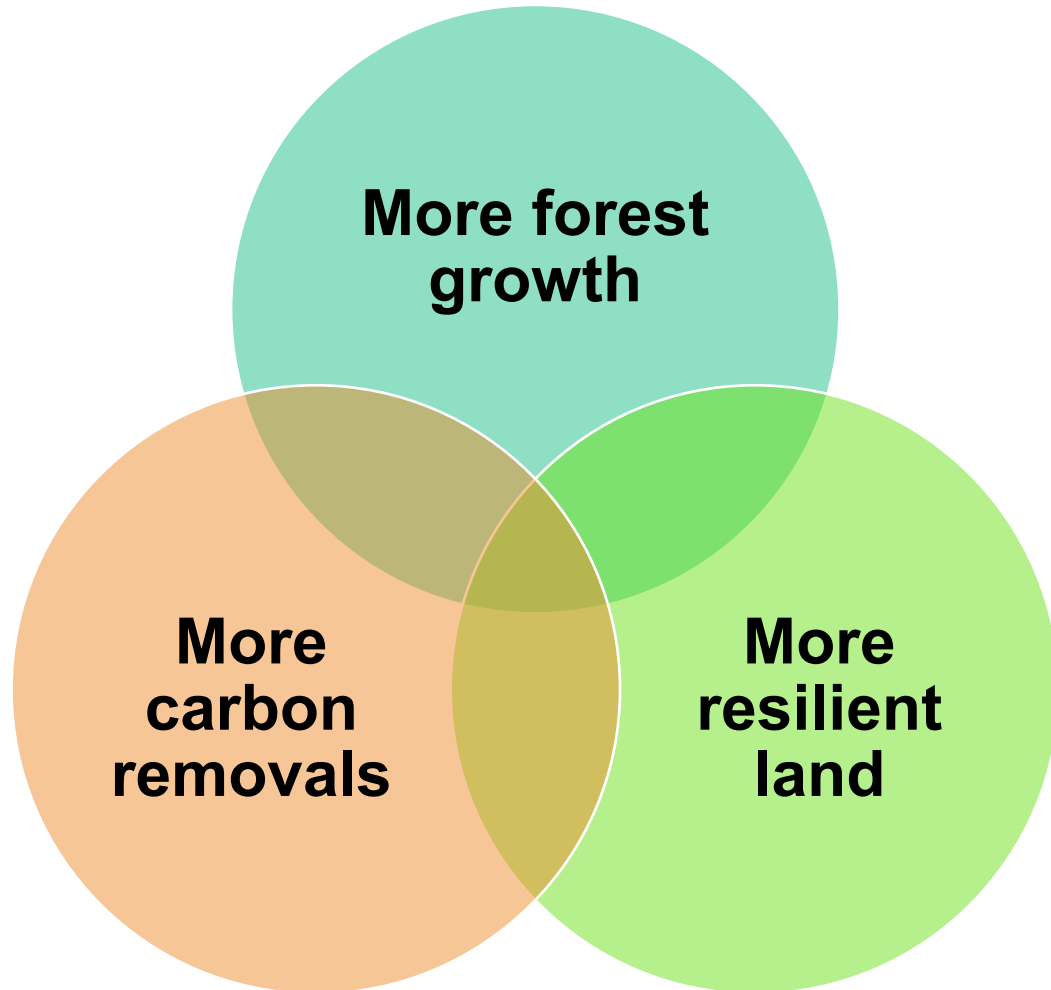
Resilient & Circular Bioeconomy

INCENTIVISE

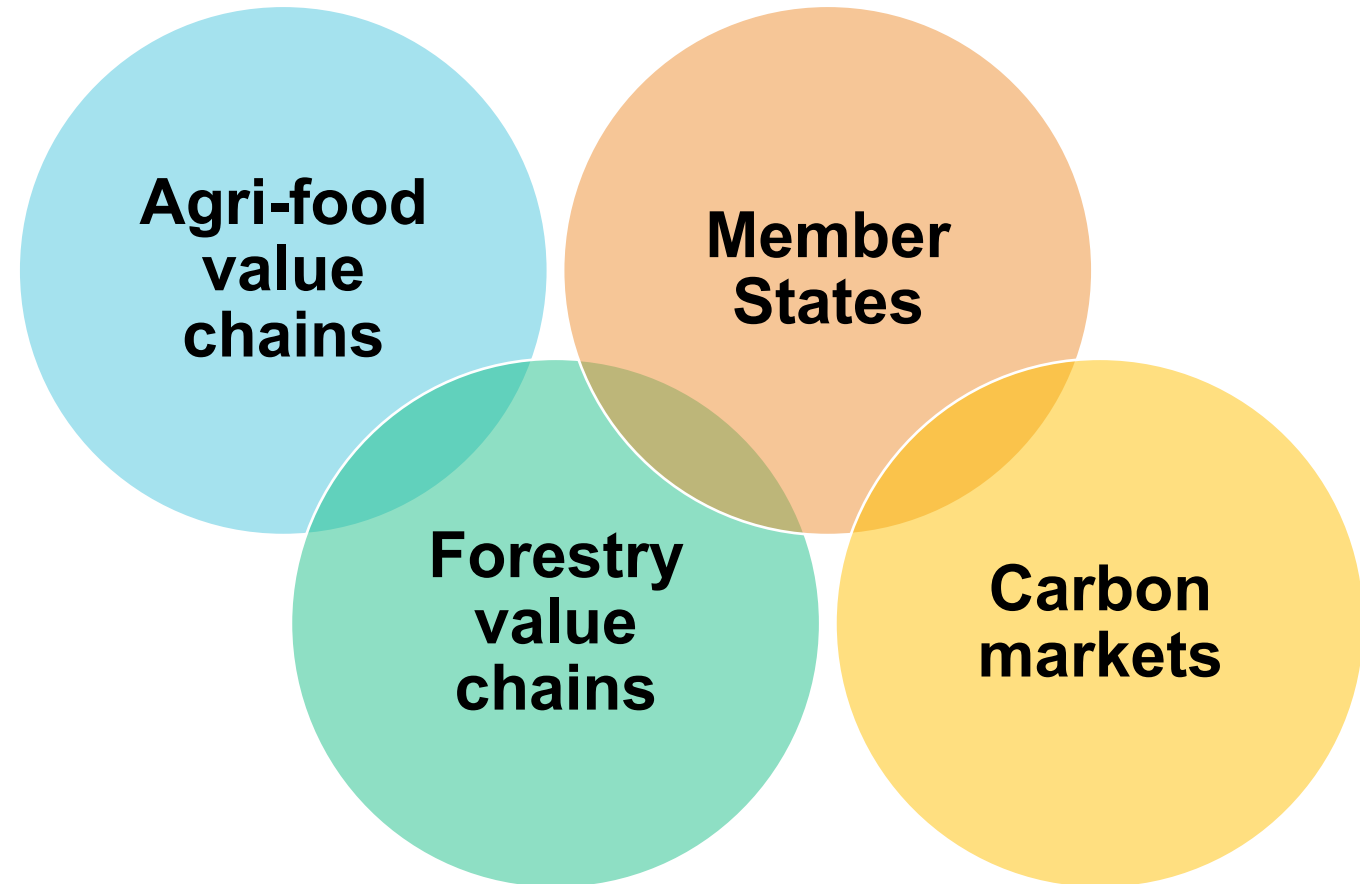


Resilient & Circular Bioeconomy

INCENTIVISE



INCLUDE ALL ACTORS



Carbon Removals and Carbon Farming Regulation

Carbon farming



Use of **conservation tillage, catch crops, cover crops** and increasing **landscape features**



Improved Forest Management (upcoming)



Restoration, rewetting of **peatlands and wetlands**



Agroforestry and other forms of mixed farming



Planting of Trees



Precision farming and more efficient use of fertilizers

Challenges

Cost of MRV

Lack of advisory services

Access to finance

Carbon Removals and Carbon Farming Regulation

Permanent storage



Bioenergy with carbon capture and storage



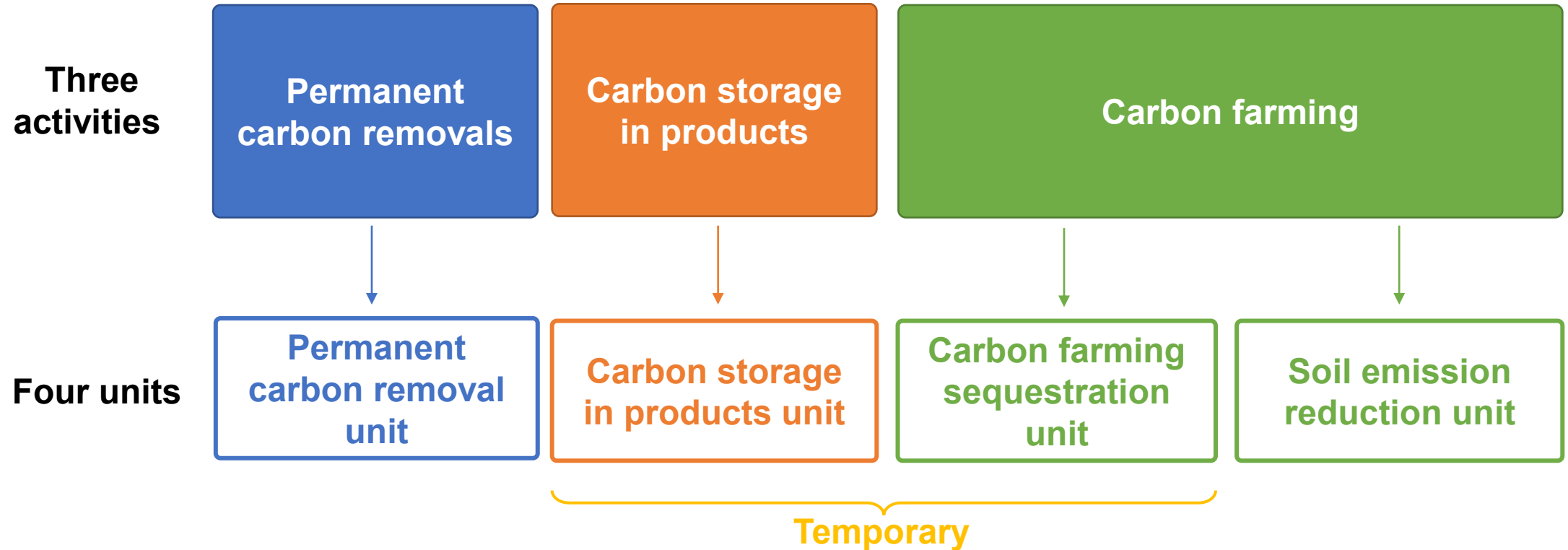
Direct air capture and storage

Carbon storage in products



Use of long-lasting wood-based construction products and other carbon-storing building materials

Overall architecture of the CRCF Regulation



Key elements of the CRCF Regulation

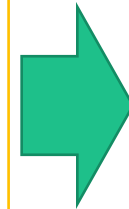
Two main pillars

Quality criteria for EU-based activities

- Quantification
- Additionality
- Long-term storage
- Sustainability

Certification rules

- Third party verification
- Certification schemes + bodies
- CRCF registry



EU certification methodologies

Operationalising the quality criteria for the different carbon removal activities



PERMANENT
CARBON
REMOVALS



CARBON
FARMING



CARBON
STORAGE IN
PRODUCTS



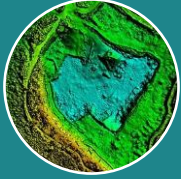
**Commission to be advised by the
EU Expert Group on Carbon Removals**

Need for Comprehensive Planning & Monitoring Tools for Land

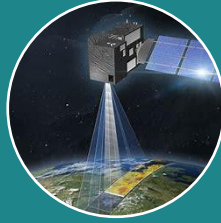


- **Picks up climate action on ground**
 - High granularity and timeliness
 - High quality information of state of play on ground
 - Compilation of national and company inventories
- **Enables planning of policies and measures by companies and Member States**
 - Supports cost-effective decision making for investments in land
 - Supports CRCF
 - High granularity and timeliness
 - Streamlining reporting and planning processes -> **simplification and cost-effectiveness**
 - **MRV as a service for all actors in bioeconomy value chains**

Need for Comprehensive Planning & Monitoring Tools for Land



Modelling



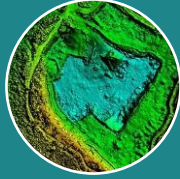
Remote Sensing



On-Ground Measurements

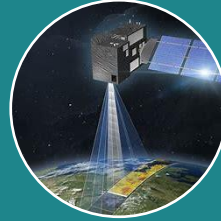


Need for Comprehensive Planning & Monitoring Tools for Land



Modelling

- **More development of soil carbon models & forest growth models**



Remote Sensing

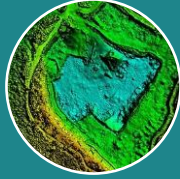
- **More products readily available for use to all actors in bioeconomy value chains**



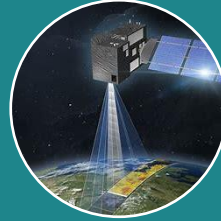
On-Ground Measurements

- **Support for calibration**

Need for Comprehensive Planning & Monitoring Tools for Land



Modelling



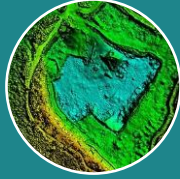
Remote Sensing



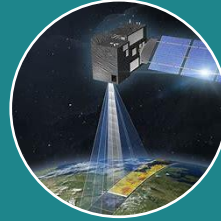
On-Ground Measurements

- Supporting MRV in CRCF methodologies;
- In line with tier-3 IPCC rules;
- Facilitating tracing emissions along value chains in company inventories;
- High-quality national greenhouse gas inventories;
- Management-dependent (ability to quantify mitigation efforts by Member States and by businesses across value chains)

Need for Comprehensive Planning & Monitoring Tools for Land



Modelling



Remote Sensing



On-Ground Measurements



- **MRV as a service for farmers, foresters, companies, Member States**
- **Simplification & Cost-efficiency**
- **Detects climate action on the ground & plans decisions for future**
- **Supporting private and public investments in land for resilient biomass and carbon removals**

Thank you!

Contact:

jurij.krajcic@ec.europa.eu

© European Union 2024

Unless otherwise noted the reuse of this presentation is authorised under the [CC BY 4.0](https://creativecommons.org/licenses/by/4.0/) license. For any use or reproduction of elements that are not owned by the EU, permission may need to be sought directly from the respective right holders.